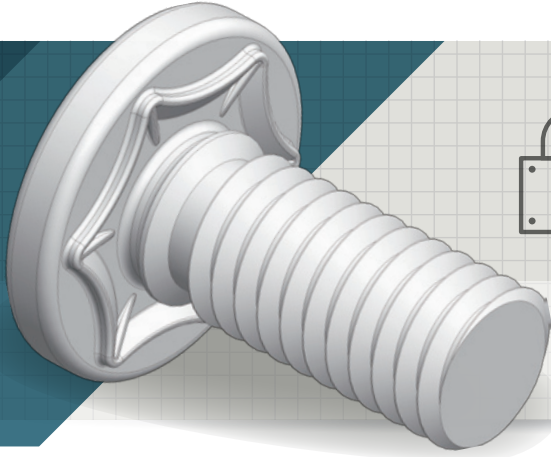


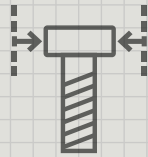
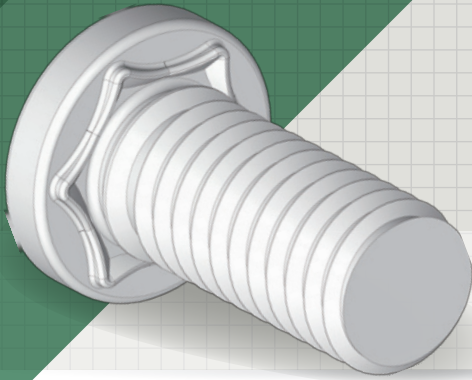
JOISTUD

Differing Clinching Stud Bolts for a variety of applications



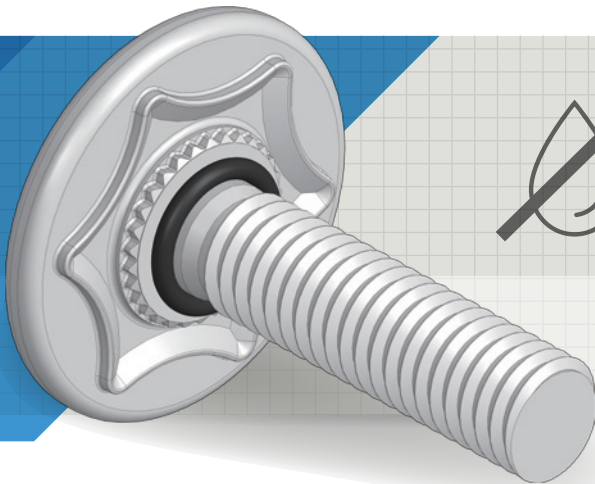
High-torque

JOISTUD-HT



Space-saving

JOISTUD-SS



Waterproof

JOISTUD-WP

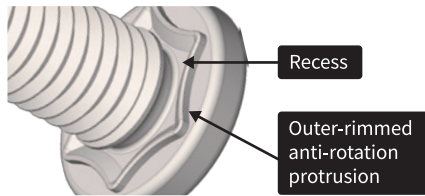
New variations to the clinching stud bolt '**JOISTUD**' for Sheet metal and Vehicle Electrification!

Warp reduction

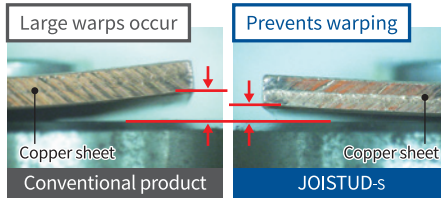
Burr reduction



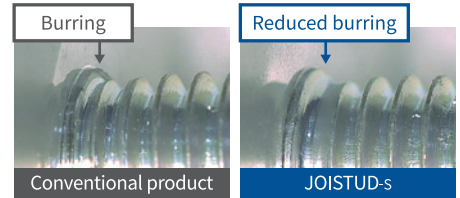
JOISTUD-S



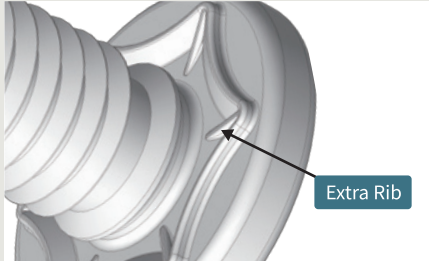
[Warp Reduction]



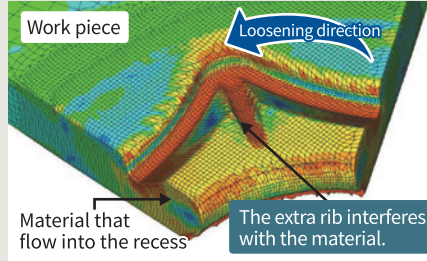
[Burr Reduction]



High-torque JOISTUD-HT



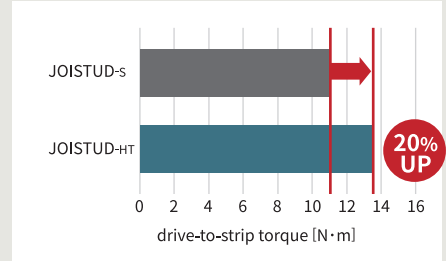
Mechanism



The extra rib with a gentle slope from the ring circumference to the center of the ring.

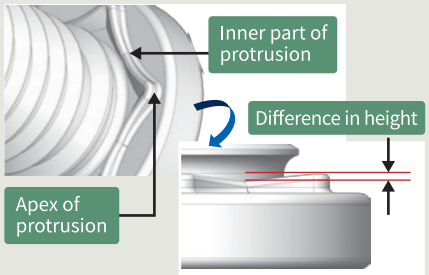
Combination of extra ribs with outer-rimmed protrusion provide an even greater anti-rotation effect.

Experiment Anti-rotation strength (drive-to-strip torque) measurement

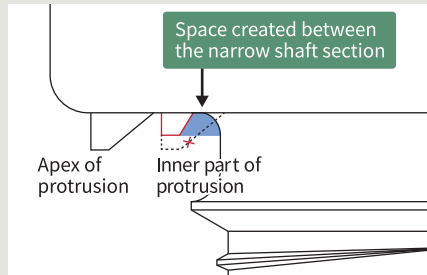


※ For nominal diameter M6

Space-saving JOISTUD-SS



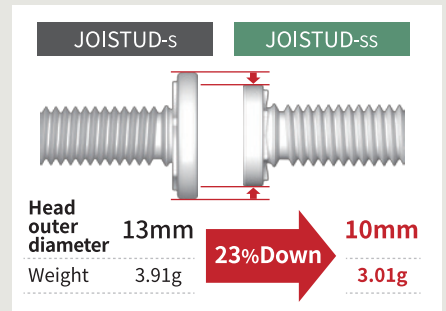
Mechanism



- Difference in height between apex and inner part of protrusion
- Revised slope angle of the protrusion

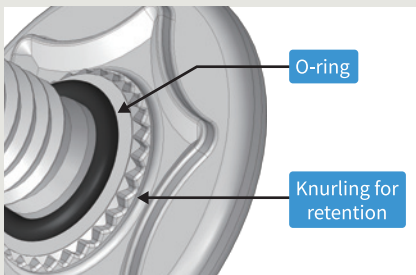
Reduced warping and burr even with a small head

Experiment Head outer diameter calculation

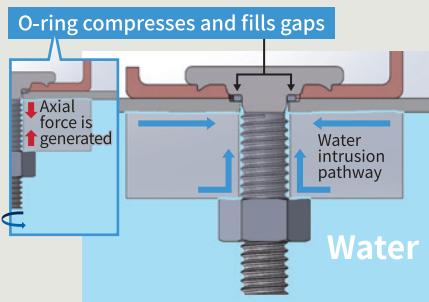


※ Nominal diameter M6, thread length 14mm

Waterproof JOISTUD-WP



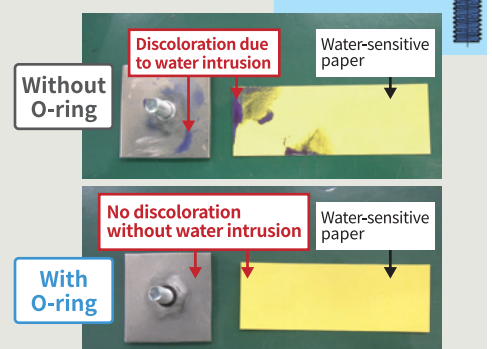
Mechanism



Knurling is placed outside to prevent O-ring from being crushed during installation.

O-ring compresses when torque is applied to the nut. Prevents water intrusion.

Experiment Verification test with water-sensitive paper



NITTOSEIKO CO.,LTD.

Fastener Division Global Sales Section

1-6-4, Honjyo-nishi, Higashiosaka city, Osaka, 578-0965, Japan
 Tel +81-6-6745-8392 Fax +81-6-6745-8372
 E-mail : sales@nittoseiko.co.jp
 URL : https://www.nittoseiko.co.jp/

