



NITTO SEIKO'S

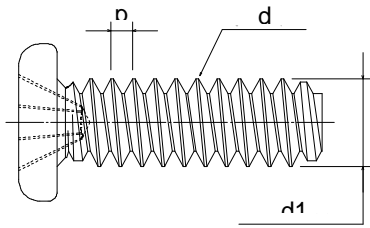
MICRO SCREW



NITTO SEIKO CO., LTD.

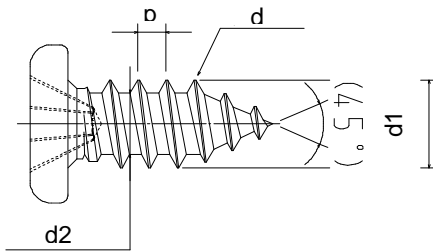
MICRO SCREW

MACHINE SCREW



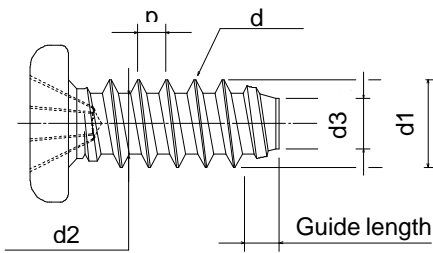
Nominal Dia. (d)	Pitch p	Major dia. d1	
		Basic Dim.	Tol.
0.8	0.2	0.8	0 -0.06
1.0	0.25	1.0	0 -0.06
1.2	0.25	1.2	0 -0.06

TAPPING CLASS A



Nominal Dia. (d)	Pitch p	Major dia. d1		Minor dia. d2 (Ref.)
		Basic Dim.	Tol.	
0.8	0.3	0.8	0 -0.06	0.55
1.0	0.35	1.0	0 -0.06	0.70
1.2	0.40	1.2	0 -0.06	0.81

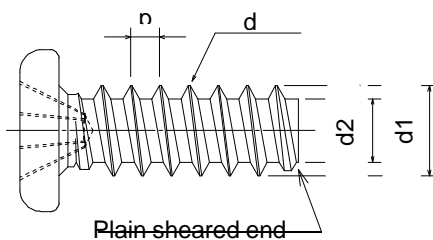
TAPPING CLASS B (with Tapered guide)



Nominal Dia. (d)	Pitch p	Major dia. d1		Minor dia. d2 (Ref.)	Point dia. d3 (Ref.)
		Basic Dim.	Tol.		
0.8	0.3	0.8	0 -0.06	0.55	0.5
1.0	0.35	1.0	0 -0.06	0.70	0.6
1.2	0.40	1.2	0 -0.06	0.81	0.7

Guide length shall be approx. 1.5 pitches.

TAPPING CLASS B (Plain sheared end)

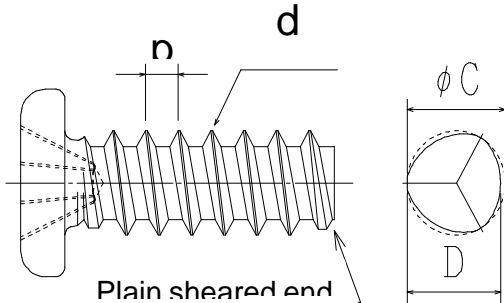


Nominal Dia. (d)	Pitch p	Major dia. d1		Minor dia. d2 (Ref.)
		Basic Dim.	Tol.	
0.8	0.3	0.8	0 -0.06	0.55
1.0	0.35	1.0	0 -0.06	0.70
1.2	0.40	1.2	0 -0.06	0.81

MICRO SCREW



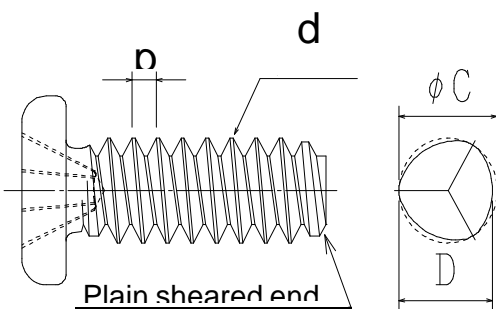
B-TITE[®]



Nominal Dia. (d)	Pitch p	Major dia. d1		D	
		Basic Dim.	Tol.	Basic Dim.	Tol.
1.0	0.35	1.03	0 -0.06	0.97	0 -0.06
1.2	0.40	1.23	0 -0.06	1.17	0 -0.06

Tapred guide is also available

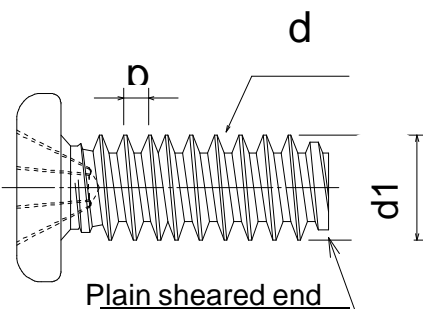
S-TITE[®]



Nominal Dia. (d)	Pitch p	C		D	
		Basic Dim.	Tol.	Basic Dim.	Tol.
1.0	0.25	1.03	0 -0.06	0.97	0 -0.06
1.2	0.25	1.23	0 -0.06	1.17	0 -0.06

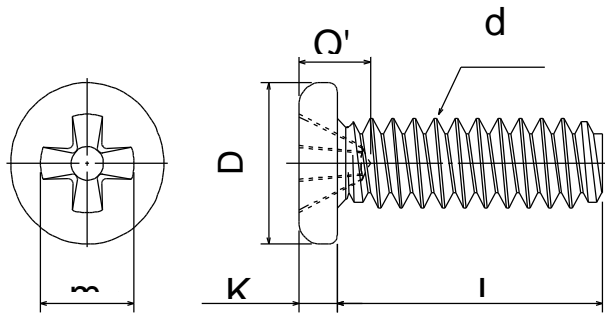
Tapred guide is also available

PS-TITE[®] 45 degrees twin crest thread



Nominal Dia. (d)	Pitch p	Major dia. (d1)	
		Basic Dim.	Tol.
0.8	0.20	0.84	0 -0.06
1.0	0.25	1.04	0 -0.06
1.2	0.25	1.26	0 -0.08

Micro Machine Screw Dimension table



Head configuration

Nominal dia.	0.8		1.0		1.2	
	Basic Dim.	Tol.	Basic Dim.	Tol.	Basic Dim.	Tol.
Head dia. D	1.6	0 -0.14	1.8	0 -0.14	2.0	+0.05 -0.10
Head height K	0.4	+0.03 -0.03	0.45	+0.03 -0.03	0.45	+0.05 -0.05
m (Ref.)	(0.90)		(1.10)		(1.20)	
Recess depth (Q) *1	Max.	0.62	Max.	0.79	Max.	0.90
	Min.	0.45	Min.	0.65	Min.	0.75

*1 Recess depth Q shall be total depth of recess.

Other type of head (Flat Countersunk, Truss etc.) are available.

Nitto Seiko DWG. No.

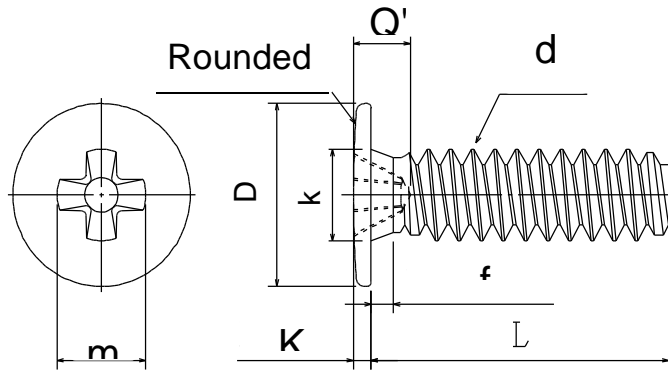
DWG.No.	Nominal dia.	Thread type	Material
W027	0.8	Machine screw	Steel (SWCH16A)
W250		Machine screw	SUS384
W411		Tapping class B (Plain sheared end)	Steel (SWCH16A)
W410	1.0	Machine screw	Steel (SWCH16A)
W209		Machine screw	SUS384
W322		B-TITE ^R (Plain sheared end)	Steel (SWCH16A)
W404		Tapping class b (Plain sheared end)	Steel (SWCH16A)
W303	1.2	Machine screw	Steel (SWCH16A)
W408		Machine screw	SUS384
W306		B-TITE ^R (Plain sheared end)	Steel (SWCH16A)
W409		Tapping class B (Plain sheared end)	Steel (SWCH16A)

* You can refer our DWG. No. on your inquiry.

Shank length and Tolerance

Machine screw				Tapping Class B				Plain sheared				B-TITE ^R				Plain sheared			
Length	Nominal dia.			Length	Nominal dia.			Length	Nominal dia.			Length	Nominal dia.			Length	Nominal dia.		
	0.8	1.0	1.2		0.8	1.0	1.2		0.8	1.0	1.2		0.8	1.0	1.2				
1.0				1.0				1.0				1.0				1.0			
1.5				1.5				1.5				1.5				1.5			
1.8				1.8				1.8				1.8				1.8			
2				2				2				2				2			
2.5				2.5				2.5				2.5				2.5			
3				3				3				3				3			
3.5				3.5				3.5				3.5				3.5			
4				4				4				4				4			
4.5				4.5				4.5				4.5				4.5			
5				5				5				5				5			
5.5				5.5				5.5				5.5				5.5			
6				6				6				6				6			
6.5				6.5				6.5				6.5				6.5			

Micro LAMIX™ Dimension table



Head configuration

Nominal dia.	0.8		1.0		1.2	
	Basic Dim.	Tol.	Basic Dim.	Tol.	Basic Dim.	Tol.
Head dia. D	1.8	$\begin{matrix} 0 \\ -0.20 \end{matrix}$	2.0	$\begin{matrix} 0 \\ -0.20 \end{matrix}$	2.5	$\begin{matrix} 0 \\ -0.20 \end{matrix}$
Head height K	0.2	$\begin{matrix} +0.03 \\ -0.03 \end{matrix}$	0.2	$\begin{matrix} +0.03 \\ -0.03 \end{matrix}$	0.2	$\begin{matrix} +0.04 \\ -0.04 \end{matrix}$
m (Ref.)	(0.75)		(0.90)		(1.00)	
Recess depth (Q) *1	Max.	0.30	Max.	0.45	Max.	0.51
	Min.	0.47	Min.	0.62	Min.	0.69
k	0.80		1.00		1.20	
f	0.20		0.25		0.25	

*1 Recess depth Q shall be total depth of recess.

Nitto Seiko DWG. No.

DWG.No.	Nominal dia.	Thread type	Material
W502	0.8	Machine screw	Steel (SWCH16A)
W505		Tapping class b (Plain sheared end)	Steel (SWCH16A)
W501	1.0	Machine screw	Steel (SWCH16A)
W507		B-TITE ^R (Plain sheared end)	Steel (SWCH16A)
W504		Tapping class b (Plain sheared end)	Steel (SWCH16A)
W500	1.2	Machine screw	Steel (SWCH16A)
W506		B-TITE ^R (Plain sheared end)	Steel (SWCH16A)
W503		Tapping class b (Plain sheared end)	Steel (SWCH16A)

* You can refer our DWG. No. on your inquiry.

Shank length and Tolerance

Machine screw				Tapping Class B <small>Plain sheared</small>				B-TITE ^R <small>Plain sheared</small>			
Nominal dia.	0.8	1.0	1.2	Nominal dia.	0.8	1.0	1.2	Nominal dia.	1.0	1.2	
Length	1.0			Length	1.0			Length	1.0		
	1.2				1.2				1.2		
	1.5	0			1.5	0			1.5	0	
	1.8	-0.15			1.8	-0.15			1.8	0	
	2				2				2	-0.15	
	2.5				2.5				2.5	0	
	3	0			3	0			3	-0.2	
	3.5	-0.2			3.5	-0.2			3.5		
	4				4				4	0	
	4.5				4.5				4.5	-0.3	
	5		0		5		0		5		
	5.5		-0.3		5.5		-0.3		5.5		
	6				6				6		
6.5			6.5			6.5					

NITTO SEIKO CO., LTD.

Mechanical Property

1. Hardness

(Unit : Hv)

	Surface	Core
Tapping & B-TITE [®] φ1.0mm Material : SWCH16A	Hv300 to 500	Hv200 to 400
Tapping & B-TITE [®] φ1.2mm Material : SWCH16A	Hv400 to 600	Hv200 to 400
Stainless steel screws	Hv150<	

(Load : 300g)

2. Torsional Torque cN · m (Kgf · cm)

	Material	Nominal diameter		
		0.8	1.0	1.2
Machine screw	SWCH16A	1.34 (0.13)	4.53 (0.46)	9.09 (0.92)
	Stainless steel	0.96 (0.09)	3.24 (0.33)	6.49 (0.66)
Tapping screw	SWCH16A	1.19 (0.12)	2.53 (0.25)	5.37 (0.54)
	Stainless steel	0.85 (0.08)	1.80 (0.18)	3.83 (0.39)
B-TITE [®]	SWCH16A	 	2.18 (0.22)	4.79 (0.48)
	Stainless steel	 	1.56 (0.15)	3.42 (0.34)

1N·m = 10.2Kgf·cm
1cN·m = 0.102Kgf·cm

3. Reference of pilot hole diameter

Nominal Dia.	B-TITE [®]	Tapping Type B
0.8	 	0.63 to 0.69
1.0	0.82 to 0.88	0.80 to 0.86
1.2	0.92 to 1.00	0.97 to 1.05

The above data is just reference. The proper size should be settled by a test upon actual work pieces. The test is available at Nitto Seiko.

NITTO SEIKO CO., LTD.

1-6-4, Honjonishi, Tel : 81-6-6745-8392
Higashiosaka City , Fax : 81-6-6745-8391
Osaka 578-0965, Japan E-mail : sales@nittoseiko.co.jp