

Converter KZ3

SPECIFICATIONS

SSD11451 25.06

General

This converter measures pulse signals proportional to flow rate into analogue & digital signals suitable to various kinds of measuring instrument.

It also outputs distribution pulse synchronizes with the input pulse signal, and divided pulse divided by internal setting.

Features

- Possibility of selection of various kinds of analogue signals.
- Apply wide range of AC power supply.
- Easy repair work by plugin type.

Specification

Pulse Input	Type of signal:	No-contact input
	Frequency:	20~100Hz(full scale)
	•Voltage input	
	Signal level:	H:3~30V L:0~1V
	•Open collector input	
	Voltage & current:	Approx.5V , Approx.0.44mA

Indication Indication of pulse input: Green LED 3p

Dividing 1/1 , 1/2 , 1/5 ,
1/10 , 1/20 , 1/50 ,
1/100 , 1/200 , 1/500 ,
1/1000 , 1/2000 , 1/5000

Analogue output	Select 1 kind out of the following signal	
	4~20mA DC	Allowable load resistance 500Ω or under
	1~5V DC	Allowable load resistance 1MΩ or over
	0~5V DC	Allowable load resistance 100kΩ or over
	0~10mV DC	Allowable load resistance 1MΩ or over
	0~100μA DC	Allowable load resistance 50kΩ or under
	Conversion accuracy	±1.0%(full scale)
	Time constant	Approx. 5 sec

Distribution pulse output

Type of signal:	12V No-contact output
Signal level :	H:Approx. 12V(no load) L:1V or under(no load)
Output Impedance:	Approx. 1kΩ



Divided pulse output

Type of signal:	Open collector output
Voltage & current:	DC30V , 30mA
Voltage at ON time:	1V or under
Pulse width:	Select from Approx. 5ms (Std) , 10ms , 50ms , or 100ms

Power source for flowmeter

DC 12V ±10% , 50mA

Insulation resistance

DC 500V,20MΩ or over between casing and power supply terminal

Withstand voltage

AC 1500V,1 minute
Test point—Same as that of insulation resistance

Noise resistance Square wave noise 1000V by noise simulator
(Noise width 1μs;Polarity ±;Synchronized power application;Phase 0~360°)

Power supply AC85~264V , 50/60Hz

Power consumption Approx. 4.1VA

Ambient temperature 0~45°C

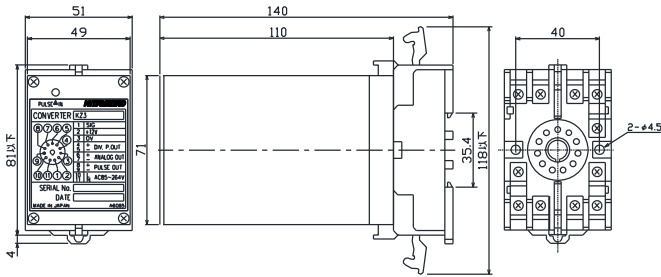
Mass Approx. 360g

Casing Resin base and Aluminium case

Operations

- Analogue signal output is made by frequency integral conversion of input pulse signal proportional to flow rate.
- Pulse signal synchronized with pulse input is made on the distribution pulse output.
- Pulse signal divided by internal divider is made on the divided pulse output.

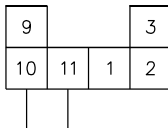
■ Outline and mounting dimensions



■ Terminal arrangement

No	Signal name
1	SIG Pulse input
2	+12V
3	0V
4	+ Distribution pulse output
5	-(0V)
6	+ Analogue output
7	-
8	+ Divided pulse output
9	-(0V)
10	Power supply
11	AC85 ~ 264V

■ Connection of power source



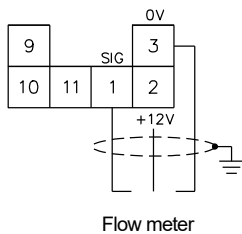
AC power source

■ Connection of pulse input signal

Use shielded cable

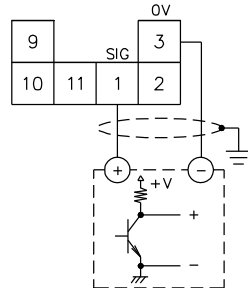
● Voltage input

Case of 12V no-contact signal type flow meter



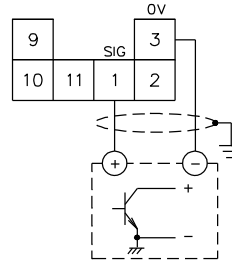
Flow meter

Case of 12V no-contact signal



12V no-contact signal

● Open collector input

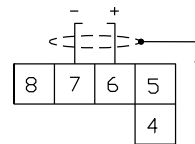


Open collector signal

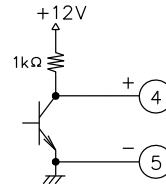
■ Connection of analogue output signal

Use shielded cable

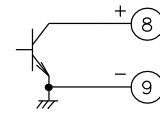
Analogue signal



■ Pulse outputs



Distribution pulse output



Divided pulse output

■ Type

KZ3-□P□

● Analogue output

1	4~20mADC
2	1~5VDC
3	0~5VDC
4	0~10mVDC
5	0~100μADC

● Divided pulse output flow-unit

1	1	mL/p	5	0.01	m ³ /p
2	0.01	L/p	6	0.1	m ³ /p
3	0.1	L/p	7	1	m ³ /p
4	1	L/p			

▼ The contents given here are subject to change without notice.

NITTOSEIKO CO.,LTD.



Control System Division Global Sales Section [Website] [Inquiry Form]
Website: <https://global.nittoseiko.com/>